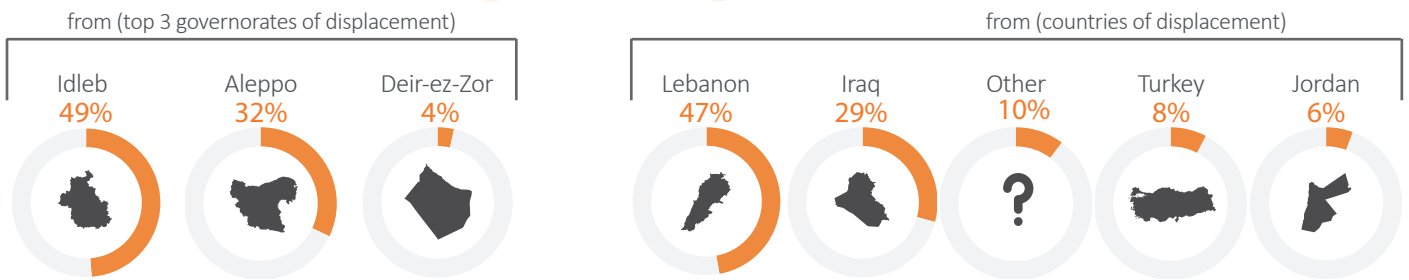


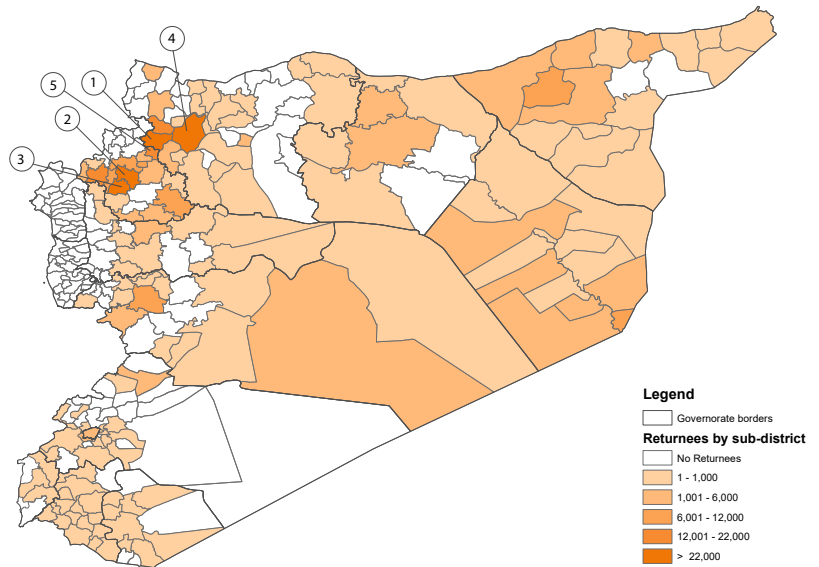
RETURNEE OVERVIEW | ANNUAL REPORT | JANUARY - DECEMBER

A returnee is defined as an individual who has returned to his/her place of origin for at least one month after having previously fled for at least one month.

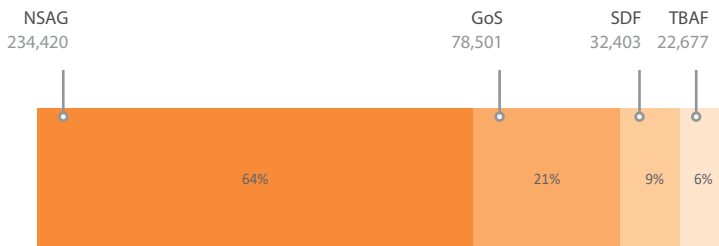


TOP 5 RETURN SUB-DISTRICTS

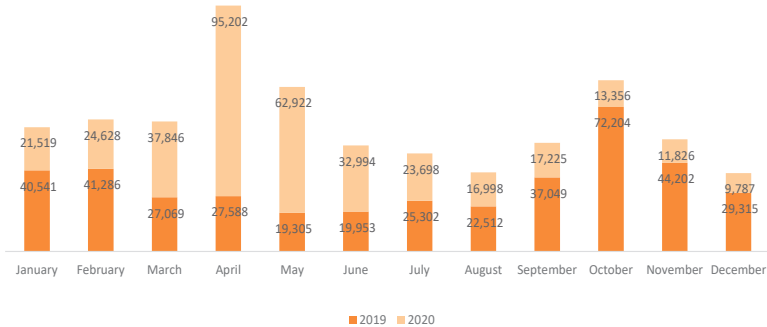
Sub-District	Governorate	Returnees
Ariha	Idleb	64,319
Atareb	Aleppo	61,291
Ehsem	Idleb	28,561
Jebel Saman	Aleppo	23,236
Teftnaz	Idleb	19,399



RETURNEES BY AREA OF CONTROL



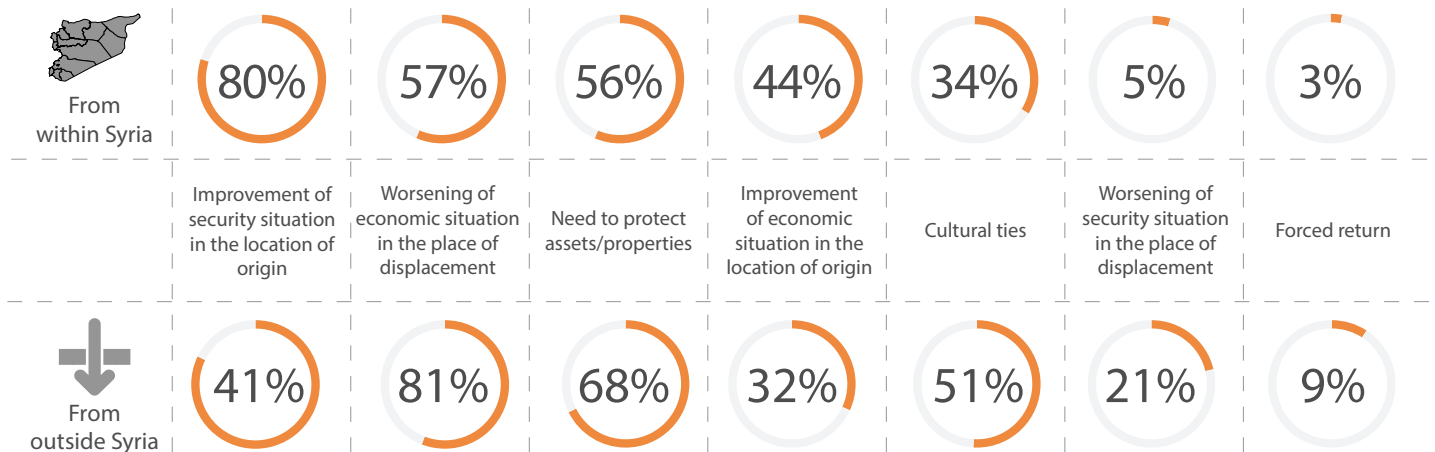
TREND BY MONTHS



¹ The information in this product is based on estimates/available data from key informants and reflects estimates on the total number of those who have returned and remained in their community of origin for at least one month. It is intended to serve as one source of data to complement and further triangulate with other sources by the IDP Task Force and Population Task Force.
² Data collected on returns from abroad was calculated at the community of return according to self-reported figures. HNAP only considers those who returned to their community of origin as returnees, therefore the figures provided do not include those returned from abroad to other places in Syria. Furthermore, persons who return from abroad may face unique challenges which could result on an under-reporting in this category. Given these contextual conditions, figures are likely to differ from those collected in the country of displacement. For more information regarding registered returns please refer to [UNHCR](https://www.unhcr.org/)

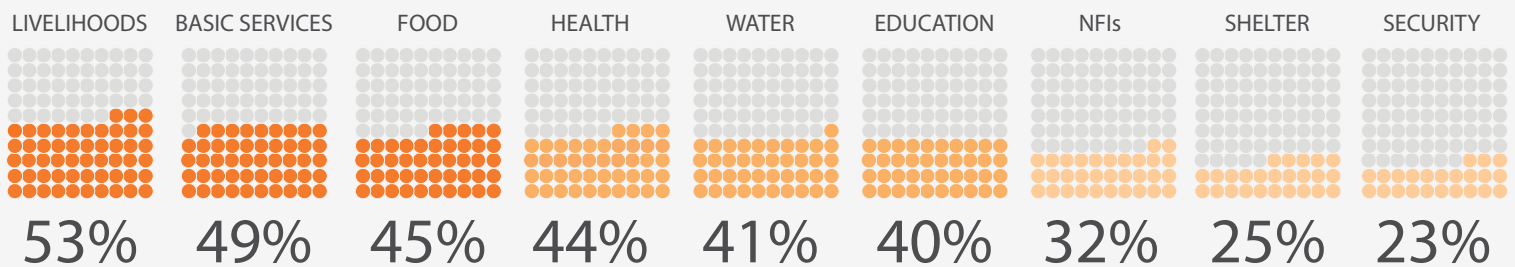
RETURNEE OVERVIEW | ANNUAL REPORT | JANUARY - DECEMBER

REASONS FOR RETURN



The numbers in the charts above represent both "important" and "most important" reason.

PRIORITY NEEDS



The numbers in the charts above represent the percentage of returnees who reported priority needs in specific sectors.

SHELTER OWNERSHIP



SUMMARY TABLES

Governorates Returned From		Countries Returned From		Governorates Returned To	
Idleb	170,409	RETURNEEES FROM OTHER COUNTRIES	IDPS AFTER RETURN FROM ABROAD Those arrived from abroad but not to place of origin	Idleb	184,826
Aleppo	111,920	Lebanon	8,883	Aleppo	110,645
Deir-ez-Zor	12,268	Iraq	5,502	Deir-ez-Zor	23,578
Al-Hasakeh	11,476	Other	1,929	Al-Hasakeh	14,945
Rural Damascus	10,585	Turkey	1,443	Homs	12,645
Damascus	10,223	Jordan	1,077	Rural Damascus	8,078
Hama	6,777			Ar-Raqqa	5,118
Homs	6,304			Hama	4,432
Ar-Raqqa	3,982			Damascus	1,761
Lattakia	3,712			Dar'a	1,148
Tartous	1,461			As-Sweida	429
As-Sweida	50			Quneitra	396
				Lattakia	-
				Tartous	-

Disclaimer:

Data collected on returns from abroad was calculated at the community of return according to self-reported figures. HNAP only considers those who returned to their community of origin as returnees, therefore the figures provided do not include those returned from abroad to other places in Syria. Furthermore, persons who return from abroad may face unique challenges which could result on an under-reporting in this category. Given these contextual conditions, figures are likely to differ from those collected in the country of displacement. For more information regarding registered returns please refer to [UNHCR](https://www.unhcr.org/)